

Customer :

customer

Customer part :

customer part

Comment :

Comment

S1=1.62

S2=2.48

Tmax=462

Tp S2=501.0

PI=0.4

HI=116

Sample =1662.60

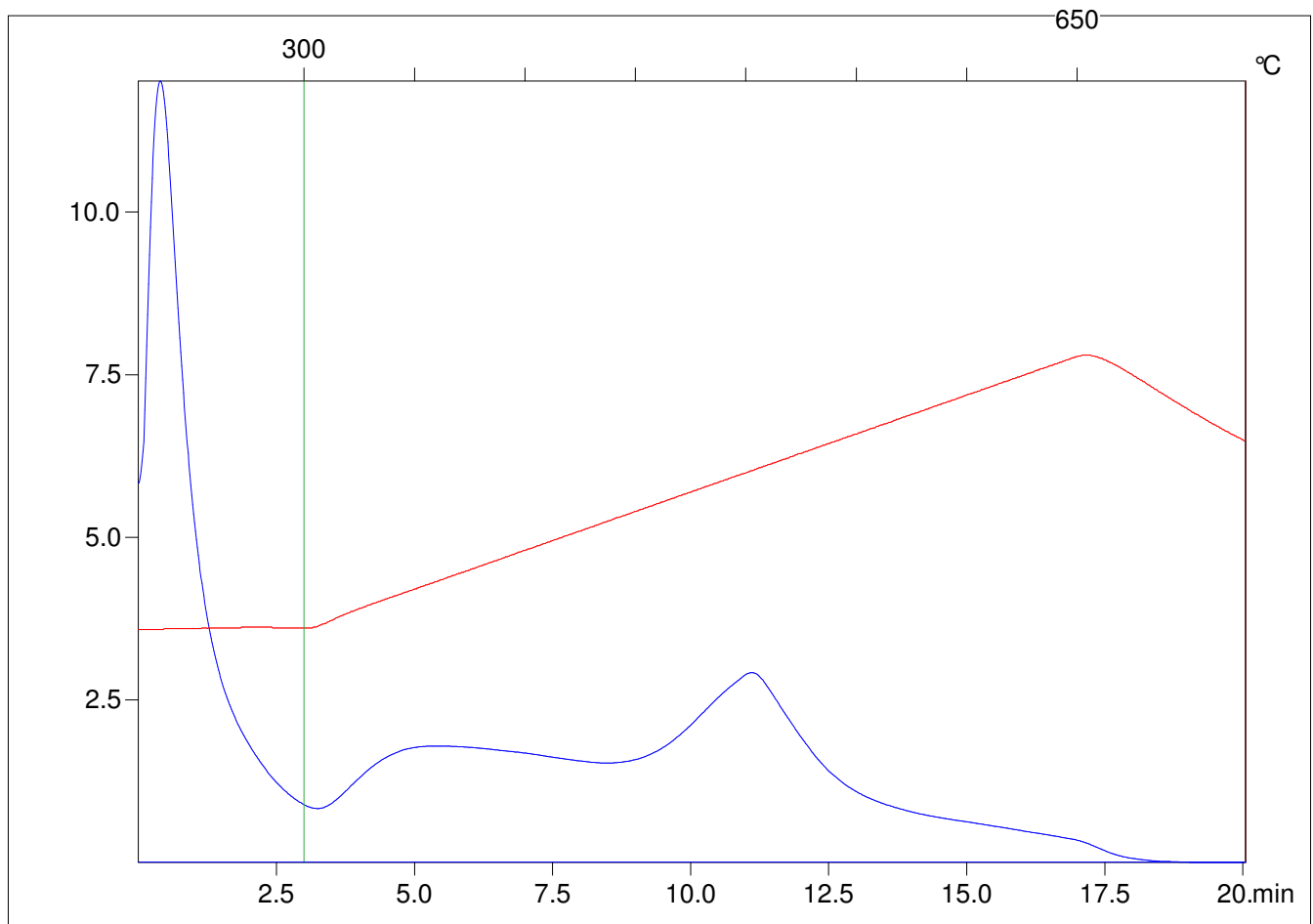
Method =Bulk Rock

Cycle=Basic

KFID(10*9)=1444

Qty =70.8

TOC=2.13



C:\VINC\PK1792\PK093.R00 : FID pyrolysis graphic

State

Pyro Status

Oxi Status